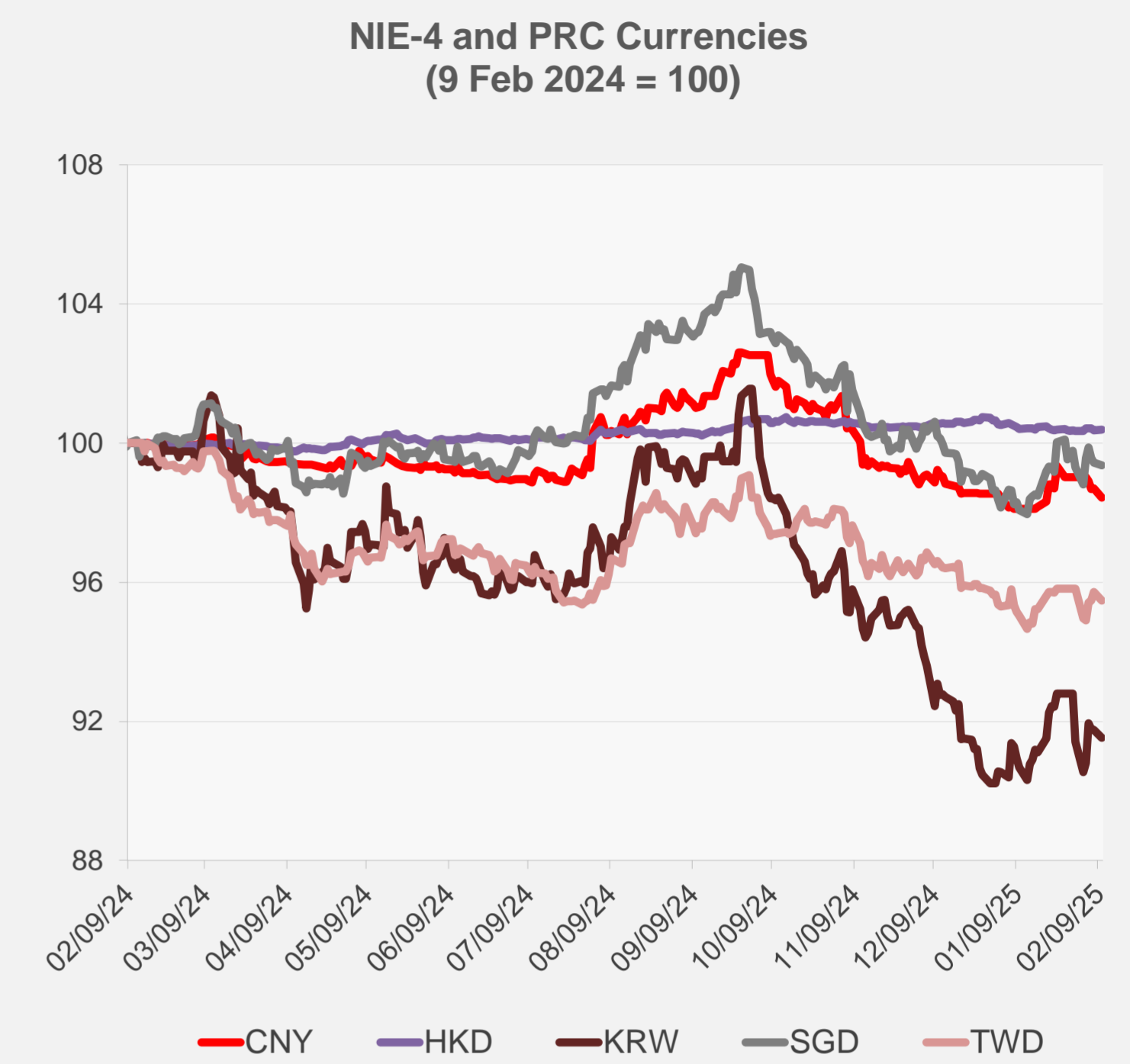
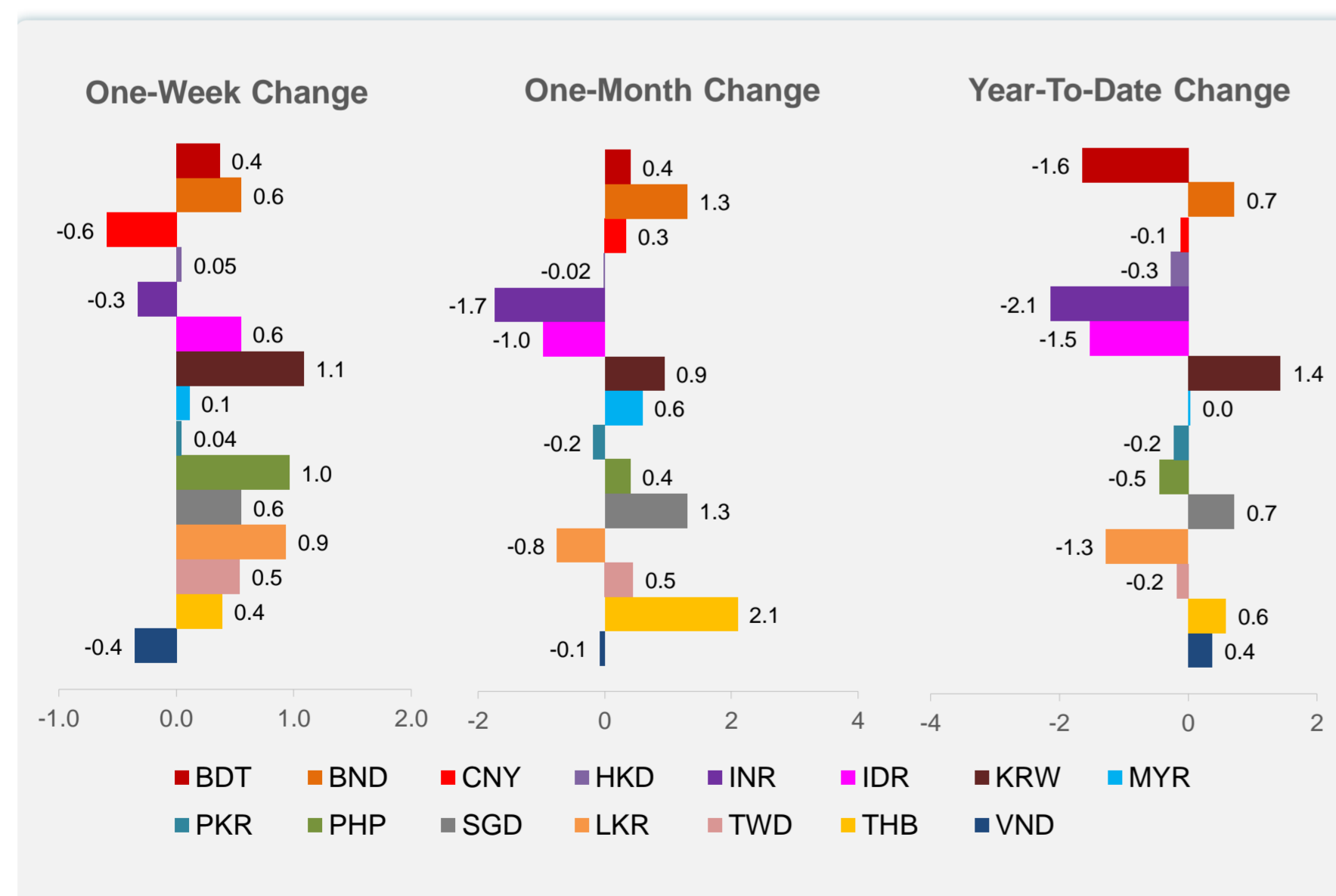
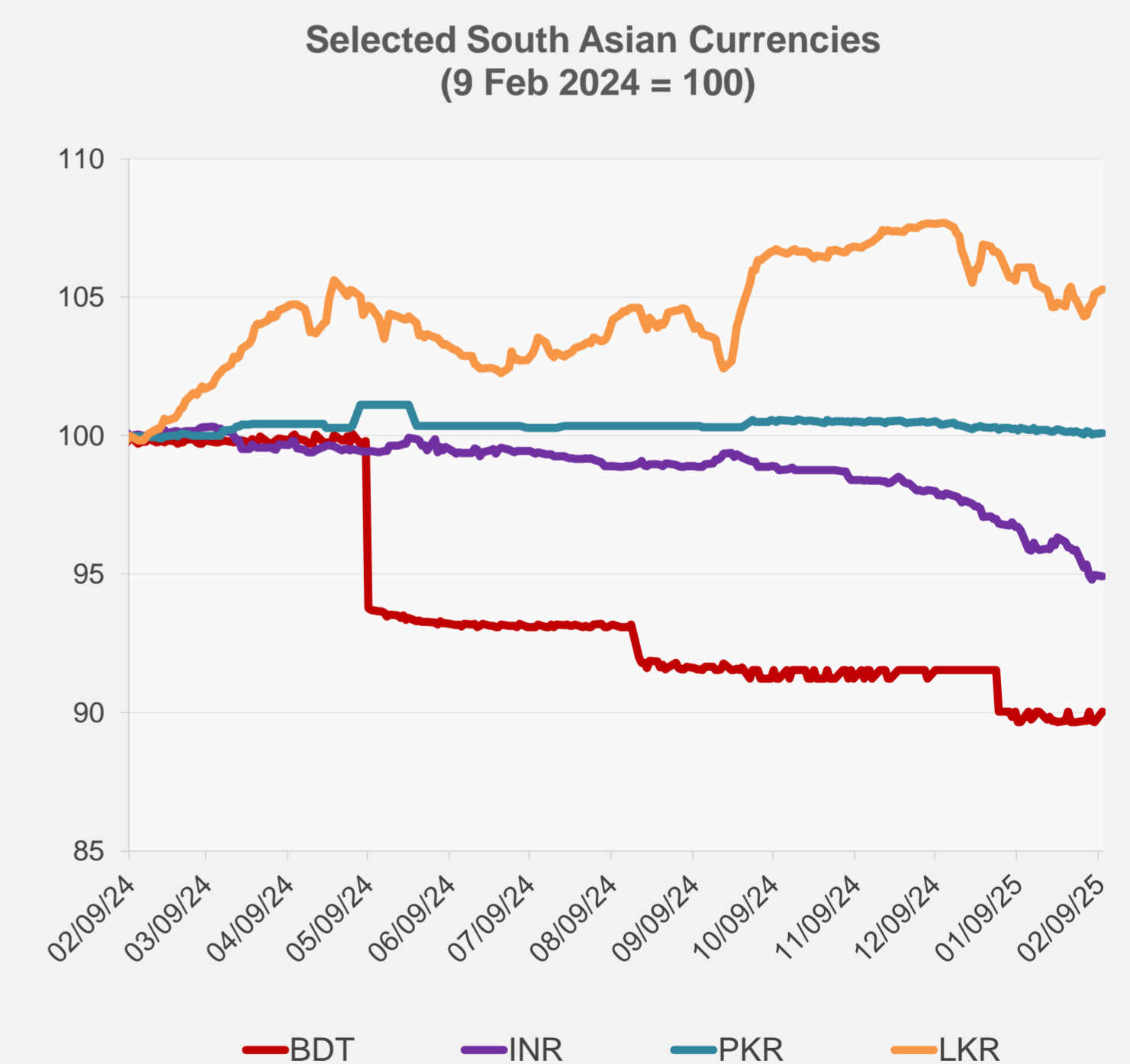
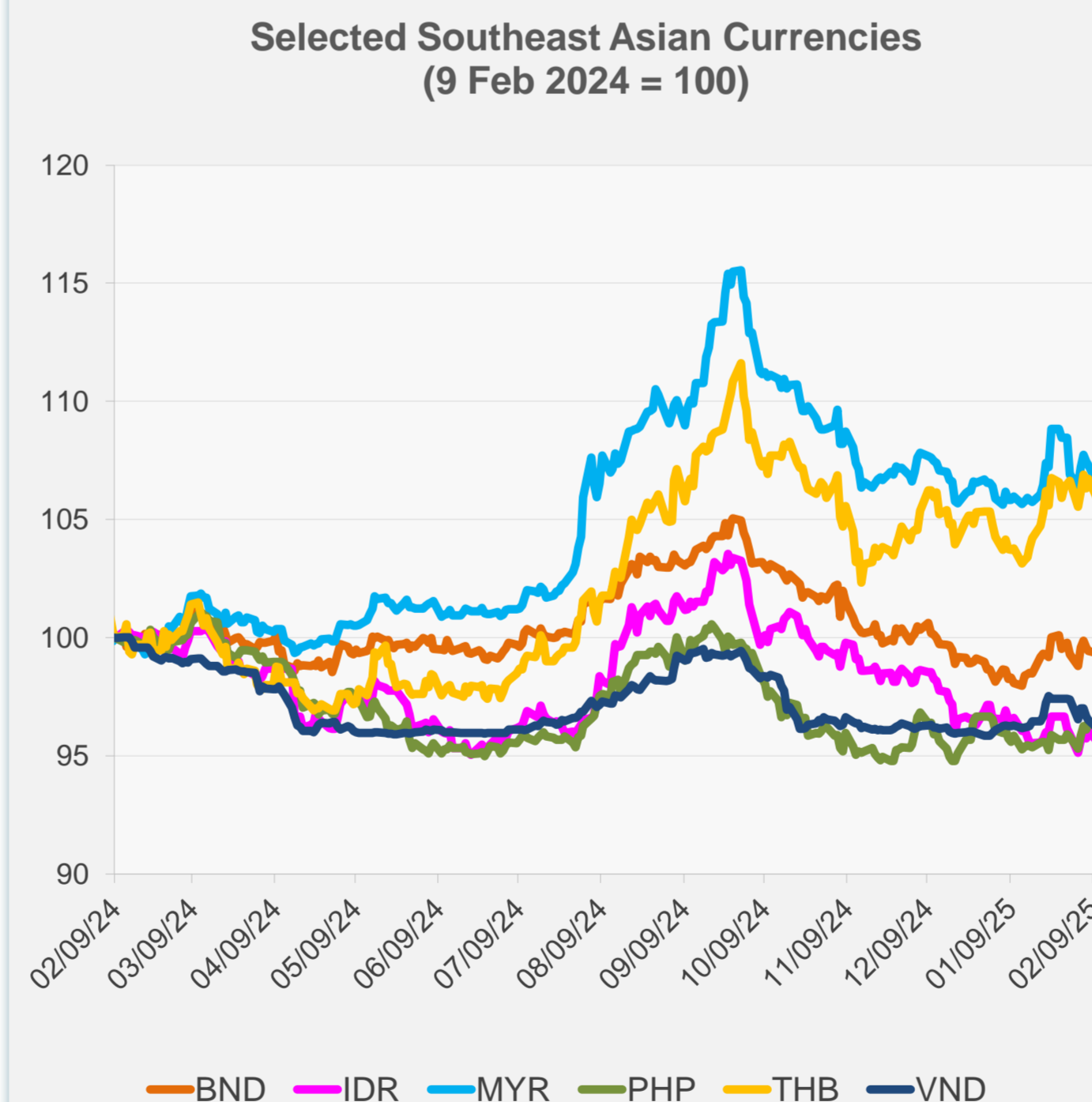


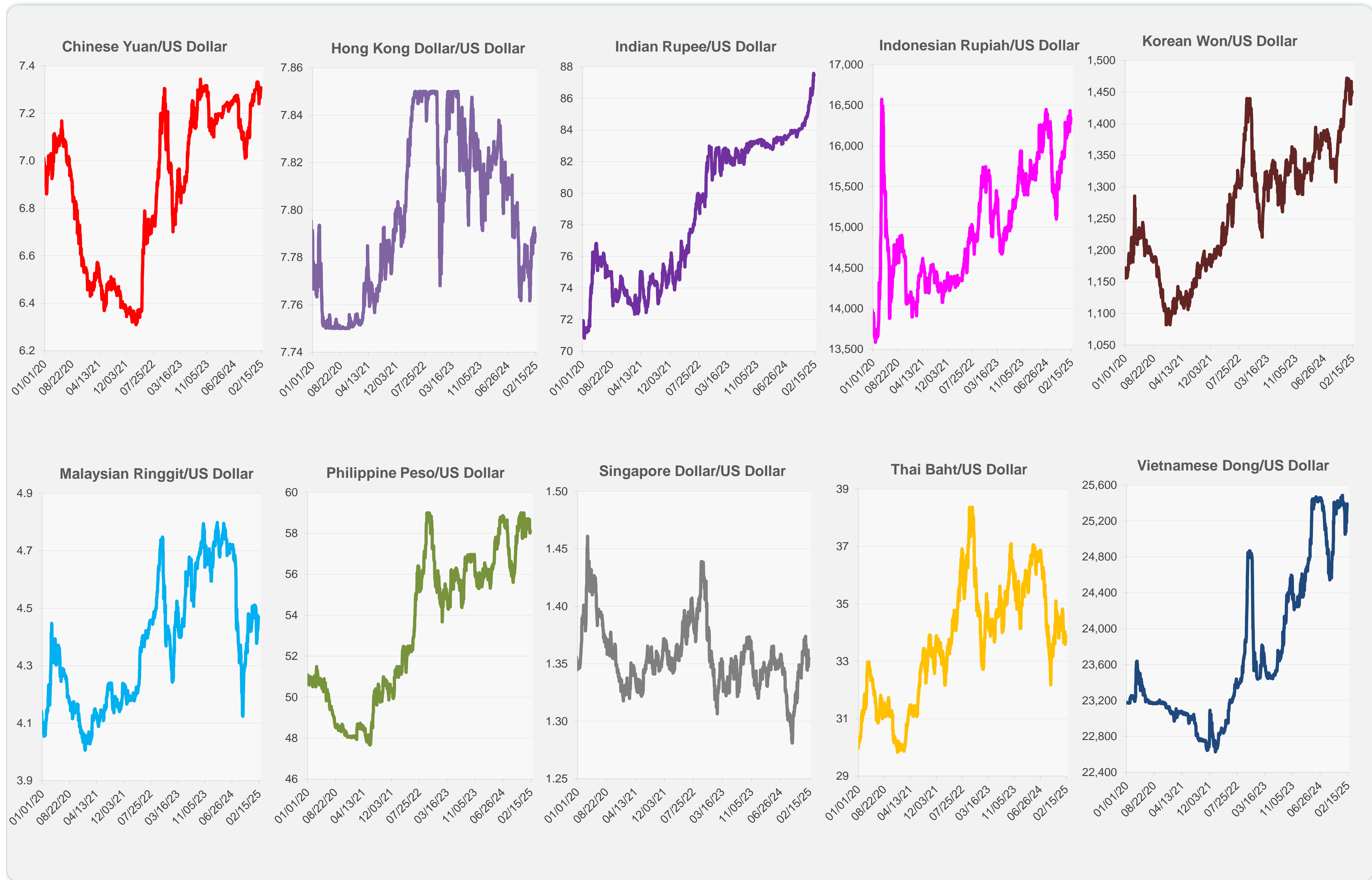
	Latest Closing	% change from Previous Day	% change from 01-Jan-25
Euro	0.97	-0.28	-0.38
Japanese yen (JPY)	151.62	-0.15	3.66
Bangladeshi taka (BDT)	121.50	0.41	-1.65
Brunei dollar (BND)	1.35	-0.08	0.72
Chinese yuan (CNY)	7.31	-0.26	-0.12
Hong Kong dollar (HKD)	7.79	0.02	-0.27
Indian rupee (INR)	87.48	-0.06	-2.14
Indonesian rupiah (IDR)	16,345.00	-0.43	-1.53
Korean won (KRW)	1,451.30	-0.26	1.44
Malaysian ringgit (MYR)	4.47	-0.67	0.03
Pakistan rupee (PKR)	279.00	0.02	-0.22
Philippine peso (PHP)	58.11	-0.17	-0.46
Singapore dollar (SGD)	1.35	-0.08	0.72
Sri Lanka rupee (LKR)	296.78	0.16	-1.28
Taipei,China NT dollar (TWD)	32.84	-0.26	-0.18
Thai baht (THB)	33.90	-0.73	0.58
Vietnamese dong (VND)	25,390.00	-0.32	0.37



NIE = Newly Industrialized Economies



Note: Negative/Decreasing values indicate depreciation of local currency, and positive/increasing values indicate appreciation.  
Source: ADB calculations using data from Haver Analytics.

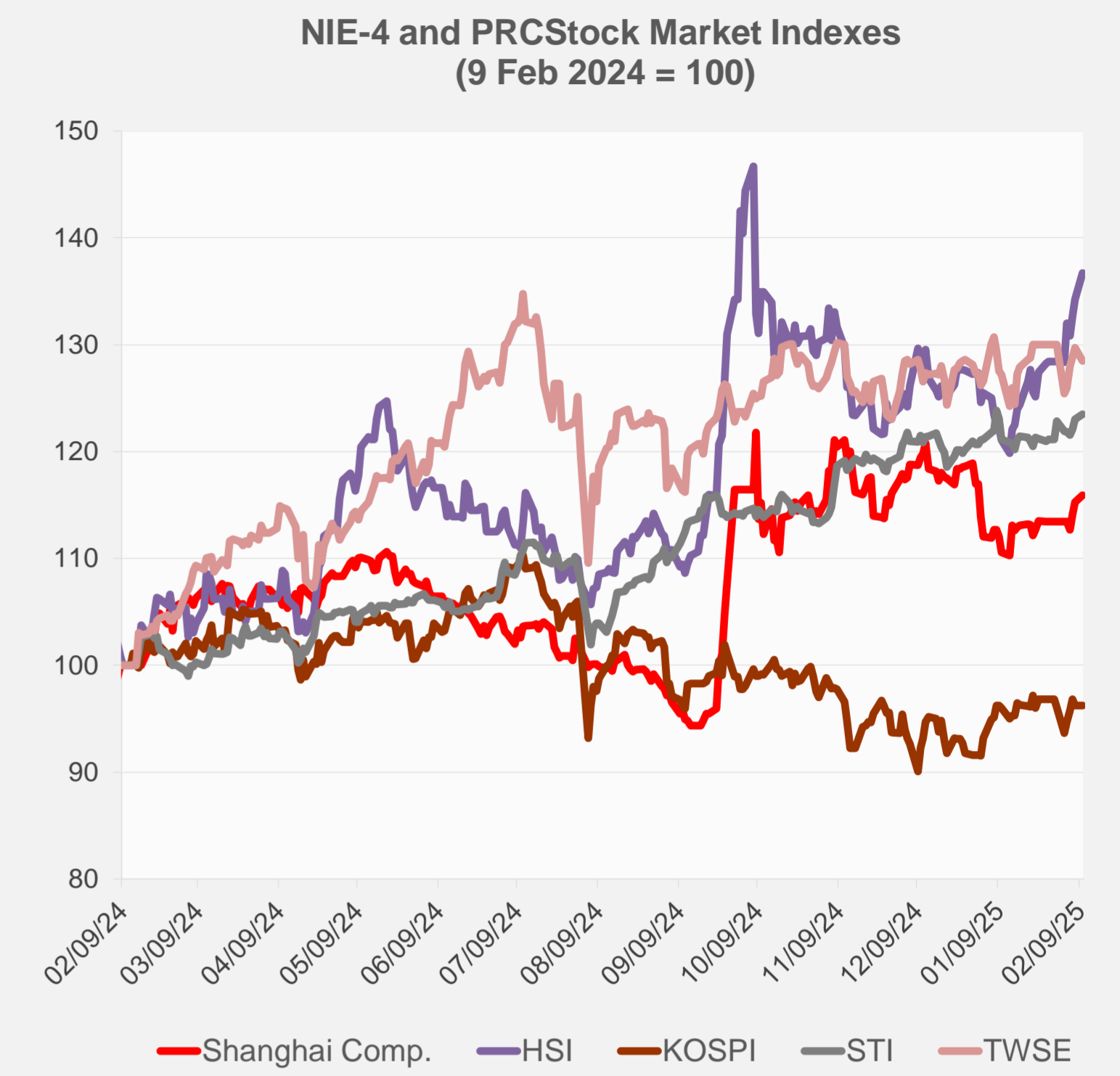
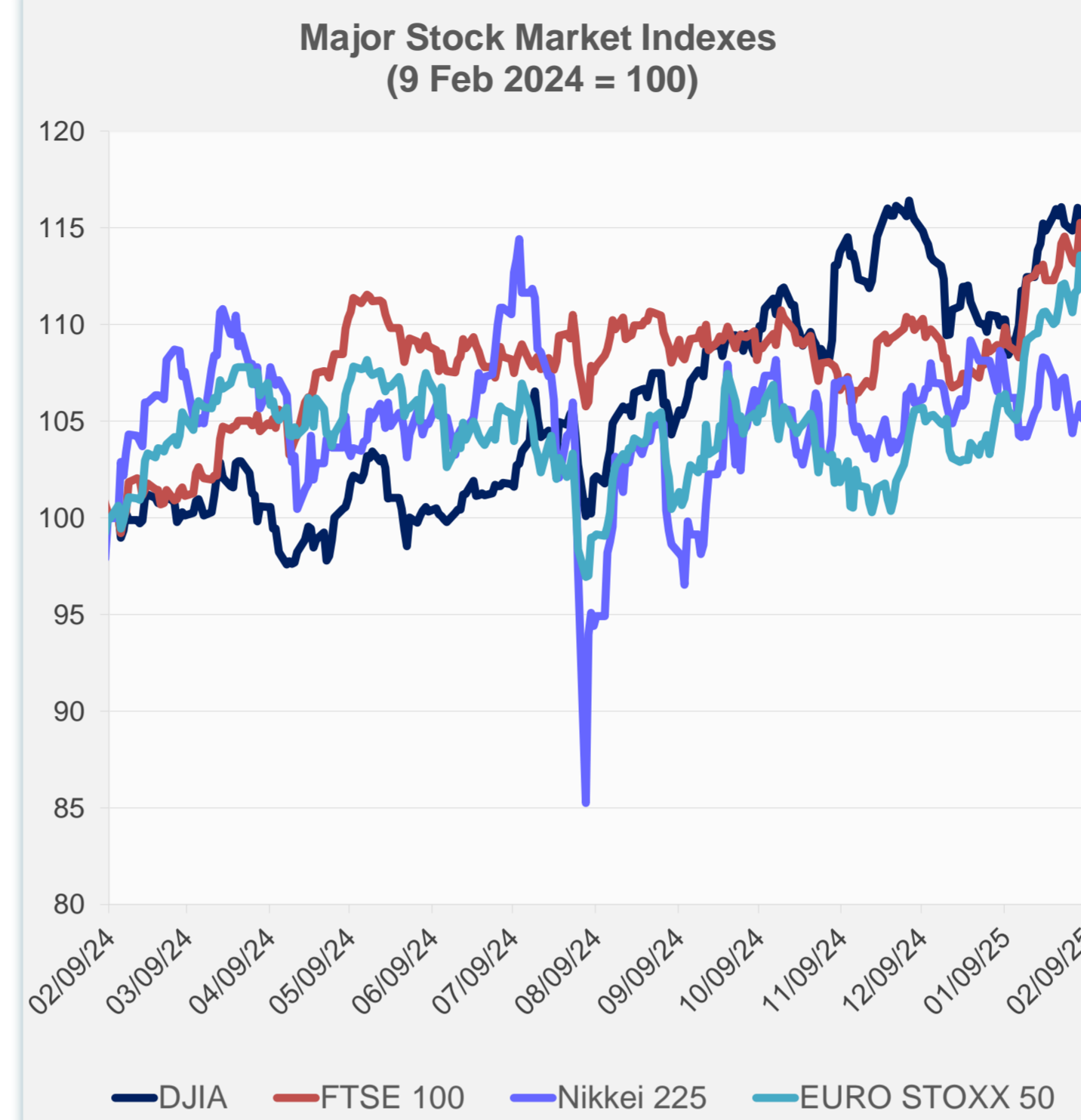


Source: Haver Analytics.

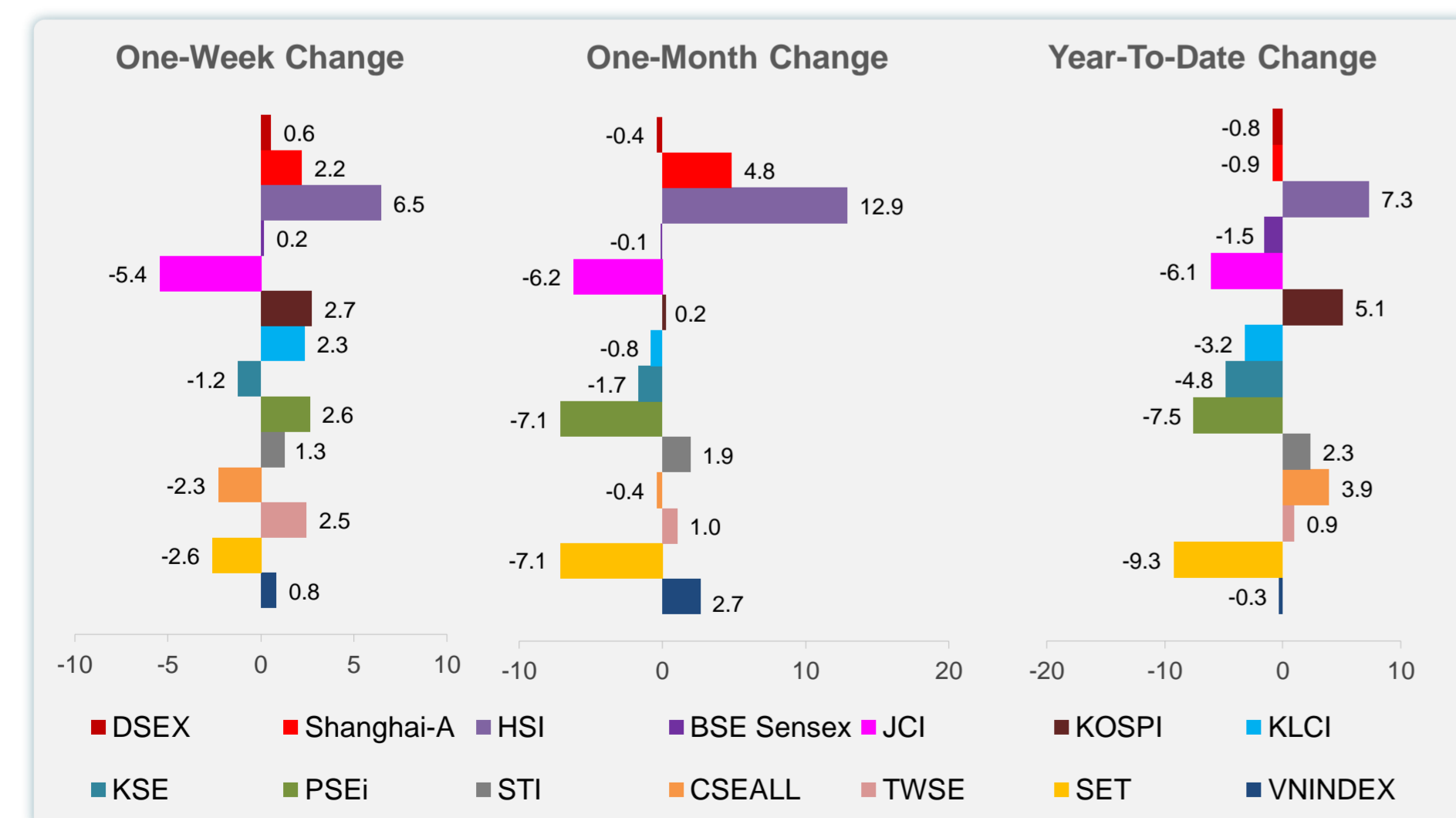
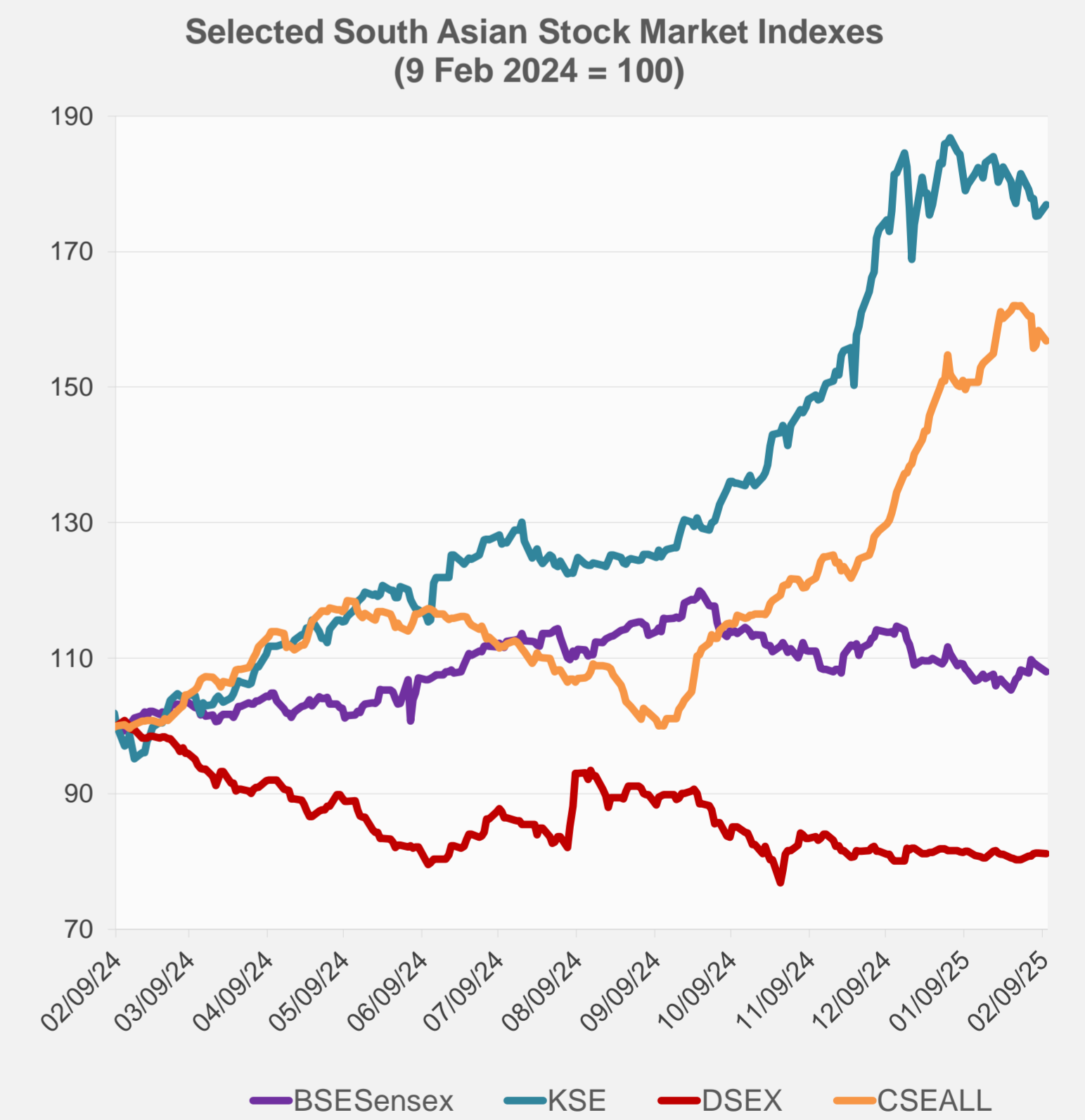
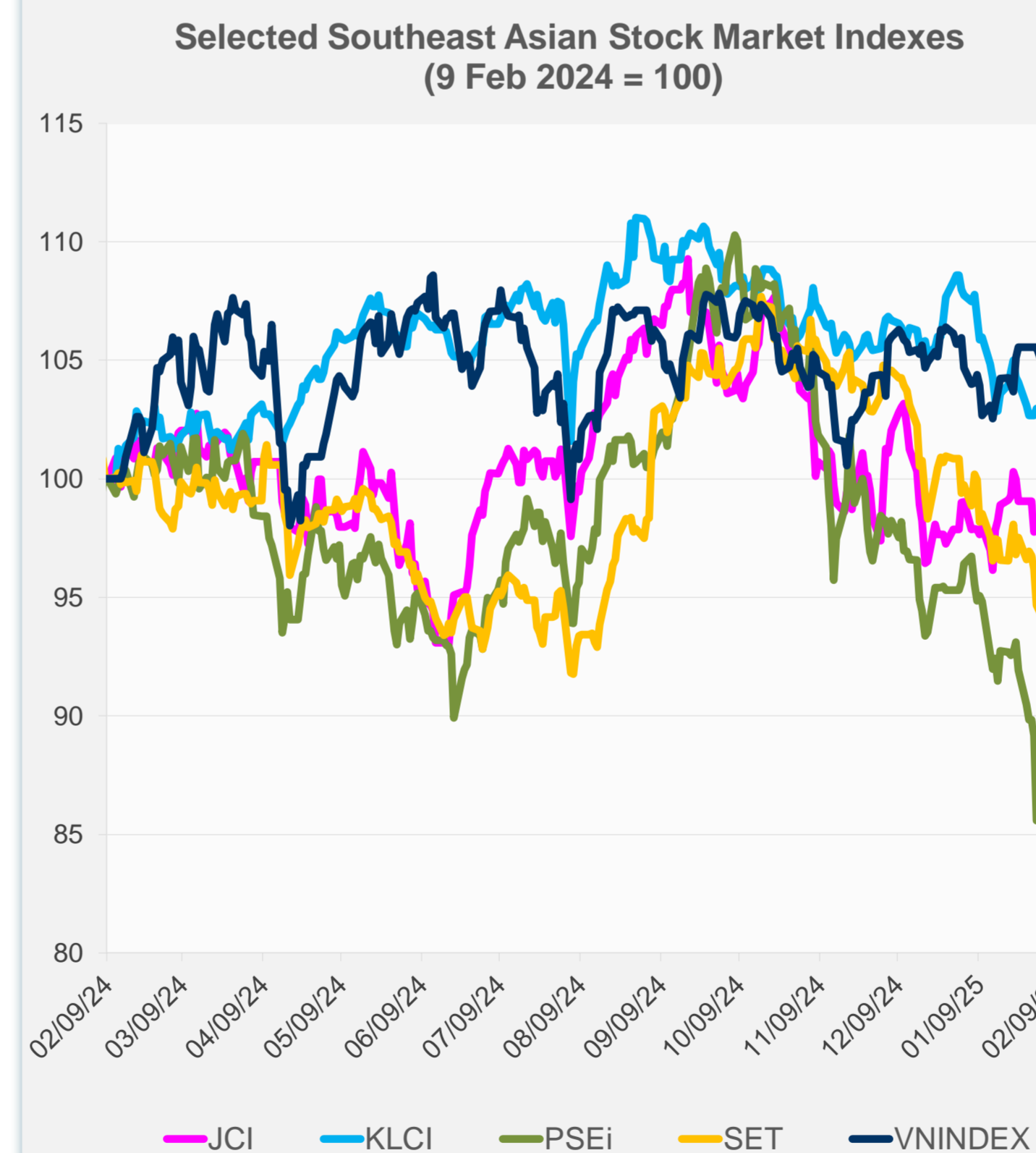


Daily Market Watch  
**STOCK INDEXES**

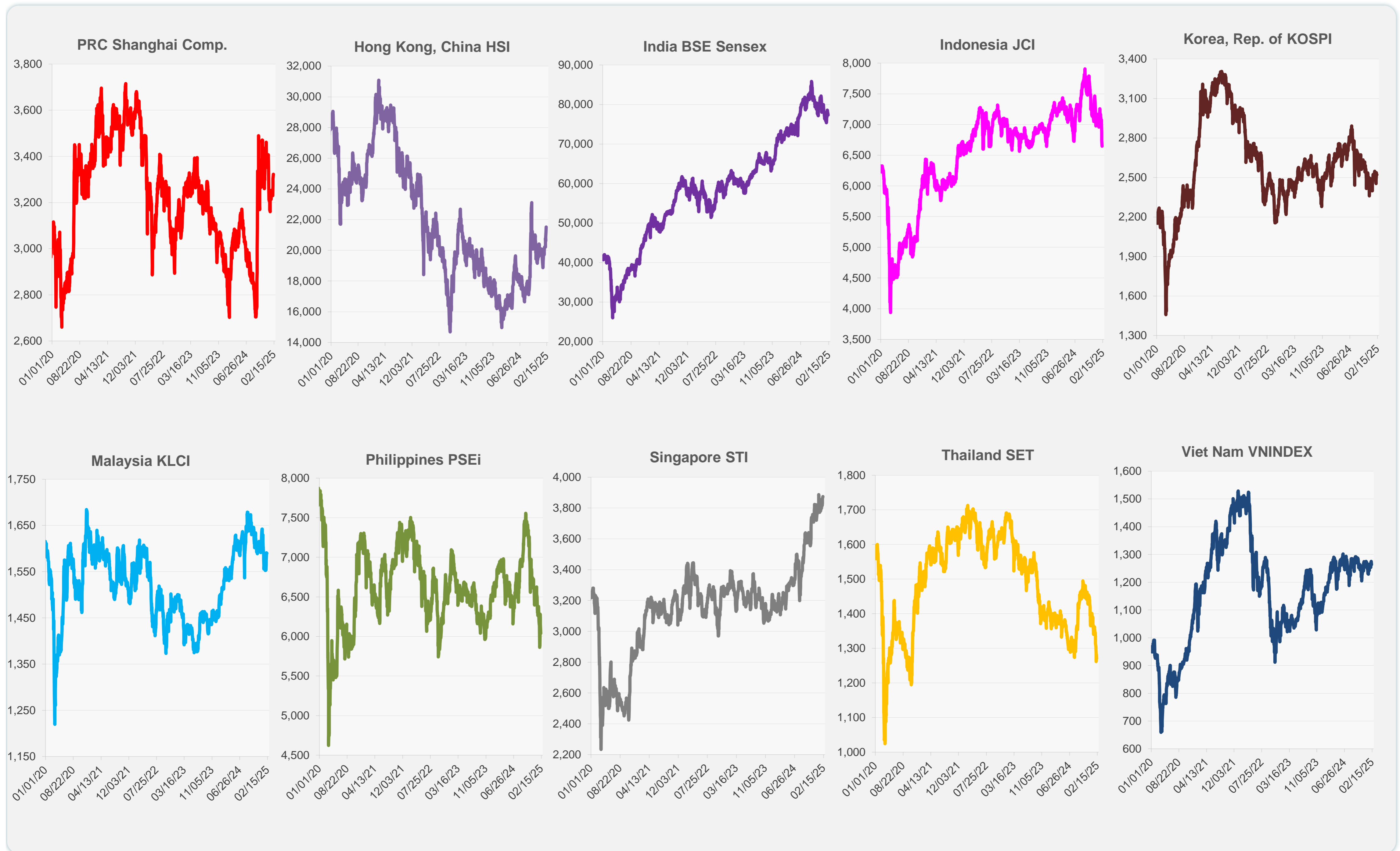
	Latest Closing	% change from Previous Day	% change from 01-Jan-25
US Dow Jones Ind Avg	44,470.41	0.38	4.53
US NASDAQ	19,714.27	0.98	2.09
US S&P 500	6,066.44	0.67	3.14
UK FTSE 100	8,767.80	0.77	7.28
EURO STOXX 50	5,358.30	0.62	9.44
Japan NIKKEI 225	38,801.17	0.04	-2.74
Bangladesh DSEX	5,174.28	-0.09	-0.84
PRC Shanghai Comp.	3,322.17	0.56	-0.88
Hong Kong, China HSI	21,521.98	1.84	7.29
India BSE Sensex	77,311.80	-0.70	-1.52
Indonesia JCI	6,648.14	-1.40	-6.10
Korea, Rep. of KOSPI	2,521.27	-0.03	5.08
Malaysia KLCI	1,589.95	-0.06	-3.19
Pakistan KSE 100	111,377.96	0.96	-4.81
Philippines PSEi	6,037.12	-1.92	-7.53
Singapore STI	3,875.13	0.36	2.31
Sri Lanka CSEALL	16,566.27	-1.01	3.90
Taipei, China TWSE	23,252.14	-0.96	0.94
Thailand SET	1,270.49	-0.90	-9.26
Viet Nam VNINDEX	1,263.26	-0.94	-0.28



NIE = Newly Industrialized Economies



Sources: ADB calculations using data from CEIC Data Company and Haver Analytics.



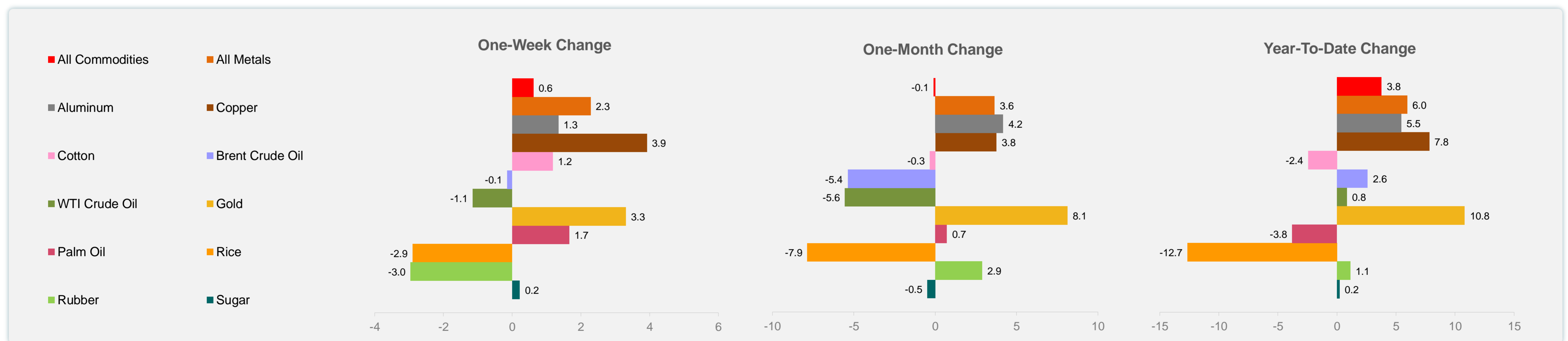
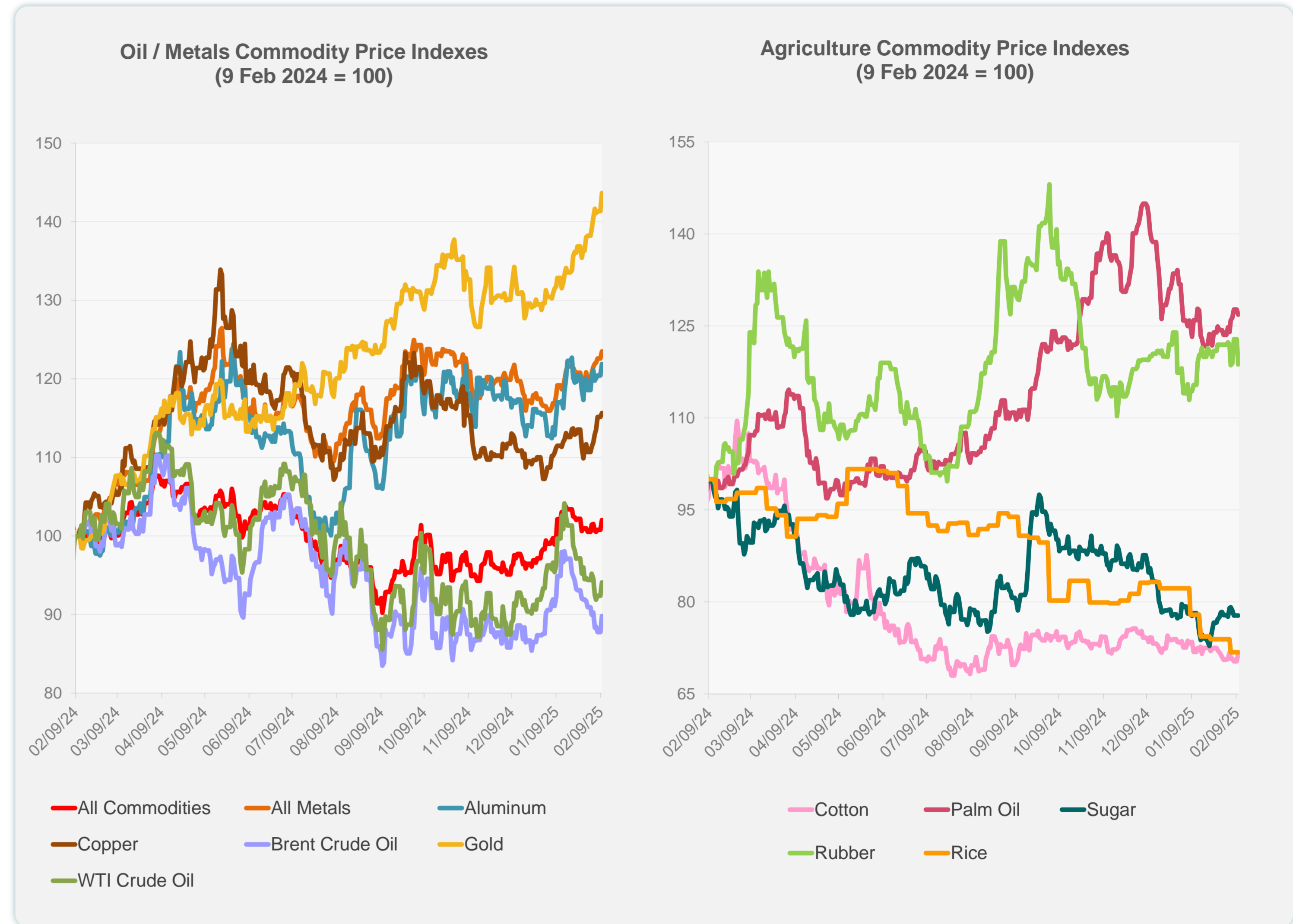
Sources: CEIC Data Company and Haver Analytics.



Daily Market Watch  
**COMMODITY PRICES**

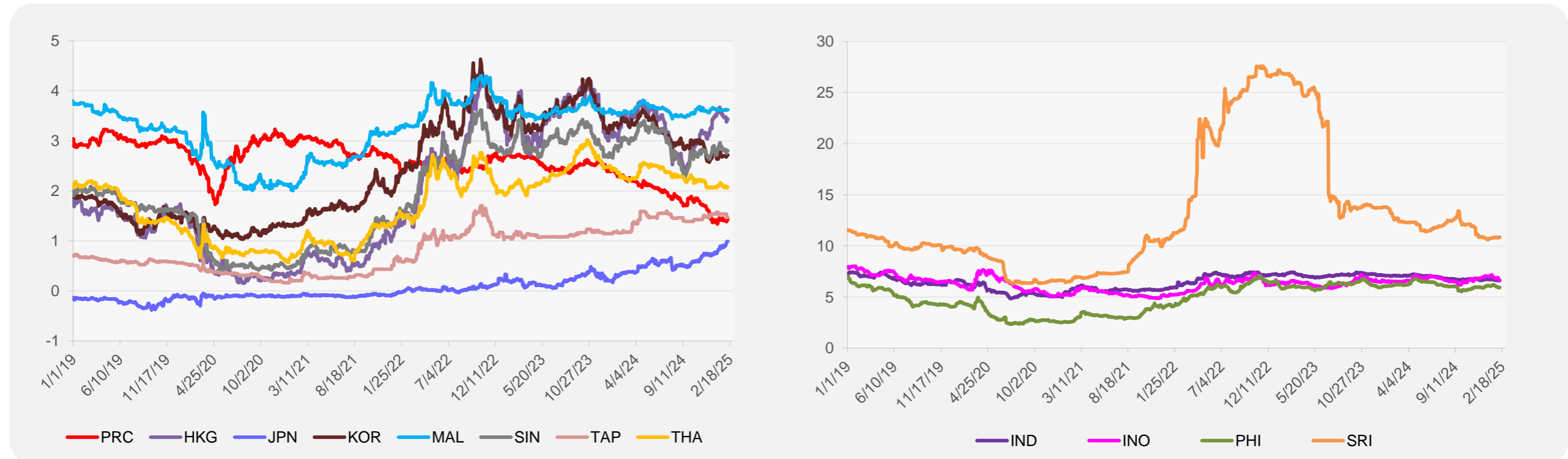
	Unit	Latest Closing	% change from Previous Day	% change from 01-Jan-25
S&P All Commodities	US\$	570.44	1.28	3.78
S&P All Metals	US\$	325.68	0.74	5.96
Aluminum	US\$/metric ton	2,664.67	1.21	5.46
Copper	US\$/metric ton	9,330.01	0.46	7.83
Cotton	US cents/lb	64.29	1.84	-2.44
Brent Crude Oil	US\$/barrel	76.04	2.36	2.61
WTI Crude Oil	US\$/barrel	72.32	1.86	0.84
Gold	US\$/troy oz	2,908.26	1.65	10.81
Palm Oil	US\$/metric tonne	1,058.43	-0.68	-3.79
Rice <sup>1</sup>	US\$/metric ton	469.00	0.00	-12.66
Rubber <sup>2</sup>	US\$/kg	239.50	-3.39	1.14
Sugar	US cents/lb	18.24	0.00	0.22

<sup>1</sup> Latest closing price from 22 January 2025.  
<sup>2</sup> Singapore Exchange, Ribbed Smoked Sheet Rubber.

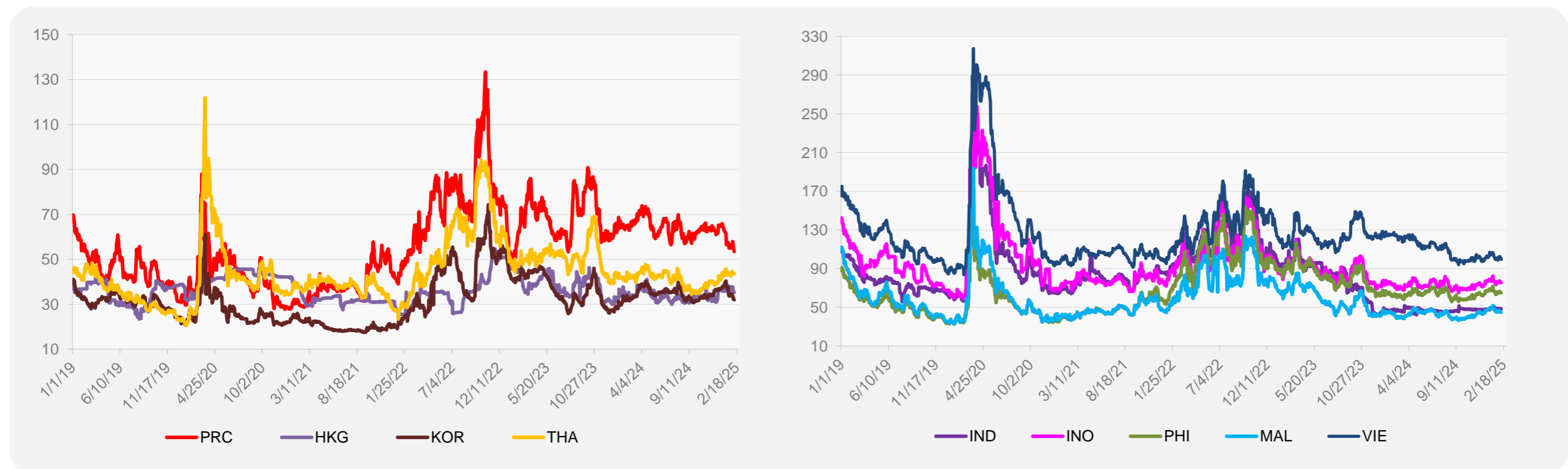


Source: ADB calculations using data from Bloomberg.

### 5-YEAR LOCAL CURRENCY GOVERNMENT BOND YIELDS (%)



### 5-YEAR CREDIT DEFAULT SWAP<sup>1</sup>



<sup>1</sup> In USD and based on sovereign bonds.  
Source: ADB calculations using data from Bloomberg.